

QUIET KIT

Installation
instructions

FOR SINK






MULTI-LANGUAGE



Ready to install soundproofing solution

Kit contents



items	quantity	function
circle strong damper		this is a special circular element reinforces the metal and relieves vibrations in the most stressed areas.
triangle strong dampers		removes vibration and noise from corner areas of the object
local strong dampers		minimizes residual vibration and noise locally in the area requiring treatment
wave memory foam		effectively absorbs noise due to its porous structure. Elastic and soft material, easy to work with
gloves		helps keep your hands safe and clean

IMPORTANT SAFETY INFORMATION



Always wear protective gear when installing



Keep away from open flames, sparks or high heat



Watch for sharp foil & film edges — risk of cuts



Use only as intended



Ventilate after installation (temporary mild odour)



Work with pleasure and without haste

1



PREPARATION

Put on protective gloves and clean the surface where the material will be installed

QUIET KIT

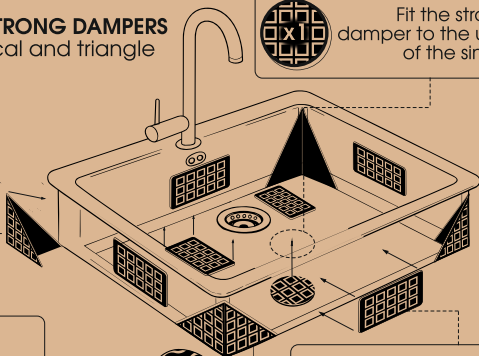
2

INSTALL STRONG DAMPERS

Circle, local and triangle



Fit the strong circle damper to the underside of the sink bottom



Use the strong triangle dampers to the corners of the sink



Fix 4 strong local dampers to the sides of the sink, and 2 to the near the sink drain

3

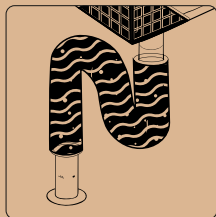
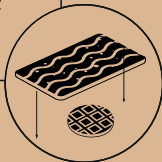
INSTALL NOISE ABSORBER

to the bottom of the sink and to the siphon



apply the wave memory foam to the bottom of the sink as a second layer, on top of the strong circle damper

QUIET BOTTOM



TREAT THE SIPHON WITH ABSORBER

apply the wave memory foam material to the siphon

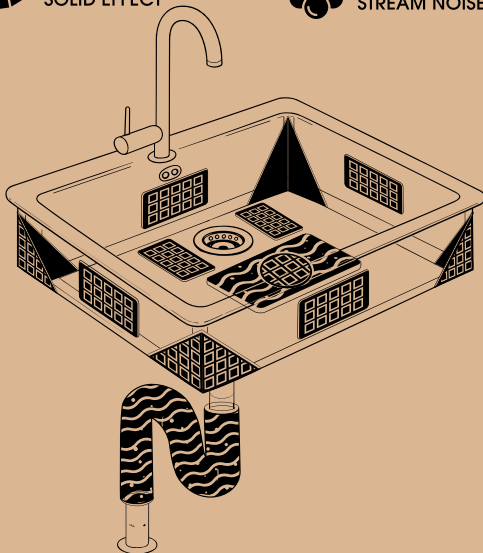
FINAL RESULT



STONE
SOLID EFFECT



ABSORB
STREAM NOISE



quiet-kits.com

Thank you for choosing



Learn more about us